

**COST Action CA18137 - European Middle Class Mass Housing**  
**MCMH-EU | <https://mcmh.eu/>**

**FRANKFURT MEETING**

CG, MC & WG Meetings, Conference & Workshop  
April 26<sup>th</sup> - 30<sup>th</sup> 2023



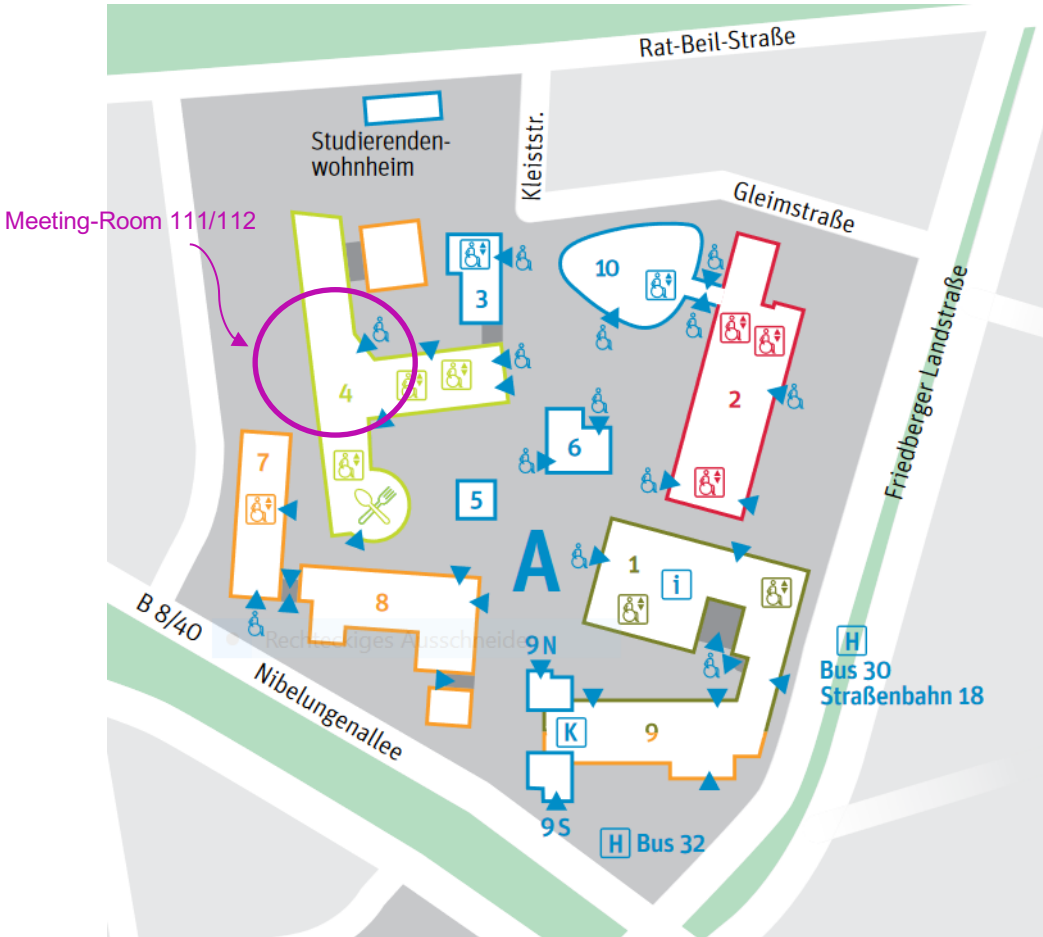
Figure: Historical aerial view of the Frankfurt-Römerstadt settlement, ca. 1930 ©  
[https://arquiscopio.com/archivo/wp-content/uploads/2013/10/131006 Frankfurt Romerstadt MAQT.jpg](https://arquiscopio.com/archivo/wp-content/uploads/2013/10/131006_Frankfurt_Romerstadt_MAQT.jpg)

**Meeting Venues**

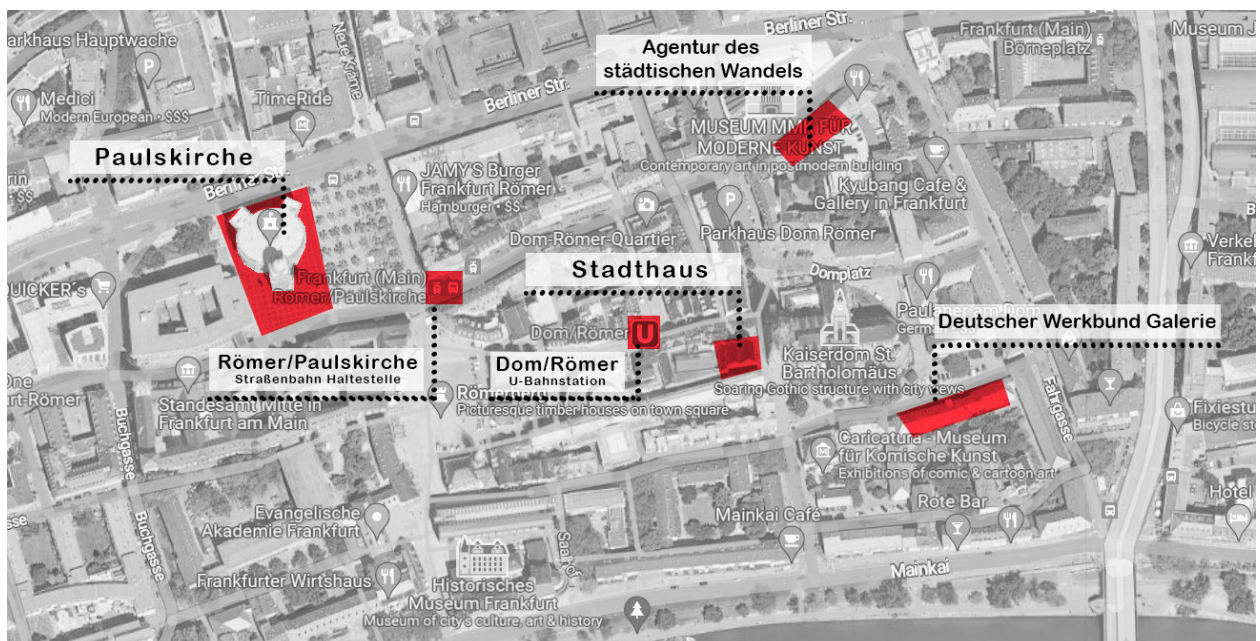
Here is the information on Meeting Venues where Frankfurt Meeting will take place.

**Meeting Venue 1 – MCMH (FRANKFURT UAS)**  
**April 26<sup>th</sup> and 27<sup>th</sup> - Frankfurt University of Applied Sciences**  
*Address: Nibelungenplatz 1, 60318 Frankfurt am Main*  
*Public Transport: Tram18, Bus M30 and M32 Nibelungenplatz*  
[map](#) / [website](#)

**Meeting Venue 1 Frankfurt UAS - Campus Map**  
Meetingrooms Building no. 4, room 111/112



**Meeting Venues 2-5 – Conference & Exhibition – Map City Center**



**Meeting Venue 2 – Conference  
April 28<sup>th</sup> (morning) Paulskirche**

*Address: Paulsplatz 11, 60311 Frankfurt am Main*

*Public Transport: U-Bahn Dom/Römer*

[map](#) / [website](#)

**Meeting Venue 3 – Conference/MC MCMH  
April 28<sup>th</sup> (afternoon) and 29<sup>th</sup> Stadthaus**

*Address: Markt 1, 60311 Frankfurt am Main*

*Public Transport: U-Bahn Dom/Römer*

[map](#) / [website](#)

**Meeting Venue 4 – Exhibition**

**April 29<sup>th</sup> (afternoon) Werkbund-Galerie**

*Address: Weckmarkt 5, 60311 Frankfurt am Main*

*Public Transport: U-Bahn Dom/Römer*

[map](#) / [website](#)

**Meeting Venue 5 – Case Study Visitis**

**April 30<sup>th</sup> (morning) Römerstadt**

*Address: Hadrianstraße 5, 60439 Frankfurt am Main*

*Public Transport: U-Bahn Römerstadt*

[map](#) / [website](#)

**Contact person for urgent matters in Frankfurt**

Name: Ruth Schlögl

Tel: +49 160 433 248 3

E-mail: [ruth.schloegl@fb1.fra-uas.de](mailto:ruth.schloegl@fb1.fra-uas.de)

**IMPORTANT**

➔ **To get reimbursed, please remember to sign the attendance list on each day you attend the event.**

## TRAVEL INFORMATION

Official travel website of Frankfurt:

<https://www.frankfurt-tourismus.de/en>

**Frankfurt Airport** is the largest commercial airport in Germany. It can be reached from all over the world and the city center can be reached in just a few minutes by taxi or suburban train.

<http://www.frankfurt-airport.com/>

Frankfurt Airport Map:

<https://www.frankfurt-airport.com/en/airport-guide/orientation/airport-map.html>

There are 2 Terminals: Terminal 1 with gates A to C and Z, as well as transition to the long-distance and regional train stations and the bus station; and Terminal 2 with Pier D or E. Both terminals are only a few minutes apart by shuttle bus or SkyLine train, which departs every two or three minutes.

Information about local public transportation: <https://www.frankfurt-airport.com/en/transport-and-parking/by-train/local-public-transportation.html>

### Public transport

Public transport in Frankfurt consists of a network of trams, metro lines and buses.

For more information: <https://www.rmv.de/c/en/timetables/networks/network-maps> and <https://www.vgf-ffm.de/en/tickets-fares-plans/tickets-purchase>

Tickets are also available from ticket machines and sales offices. Many types of tickets are available from the bus driver and from the online TicketShop. <https://www.rmv.de/c/en/tickets>

To find out which lines and connections to take, it is advisable to use [Google Maps](#). It can be used on desktop and mobile devices.

### Visa Requirements

Entering Germany is generally visa-free for European nationals with a valid ID or passport.

Please check if you are required to obtain a visa before entering Germany here:

<https://www.germany.info/us-en/service/visa/business-visa/963542>

<https://www.auswaertiges-amt.de/en/visa-service/-/231148>

### COVID-19 Entry Requirements

Entry restrictions are mostly lifted in Germany.

Please check current applicable requirements before travel here:

<https://www.auswaertiges-amt.de/en/coronavirus/2317268>

Also, you are advised to check COVID-19 related requirements with your airline or other transport company as well.



## Accommodation

A wide range of accommodation options offered in Frankfurt, although there is a fair. In this list of hotels are only suggestions for your stay in the center, more and cheaper hotels are in Eastend and near main station. You are free to choose any accommodation you find suiting. Please consult COST reimbursement rules.

### Ruby Louise Hotel & Bar



Address: Neue Rothofstrasse 3

<https://www.ruby-hotels.com/en>

Price: 140€/night

Located between the banking district and the historic old town. The Main Tower is a 3-min walk away, while Römerberg is a 10-min wander.

### Studio House Frankfurt



Address: Cranachstrasse 6

<https://www.studiohouse-frankfurt.com>

Price: 120€/night

Located on the left bank of the river Main, opposite the historic old town. Many museums and two pedestrian bridges are nearby.

### Mercure Hotel Kaiserhof Frankfurt City Center



Address: Kaiserstr. 62

[website](#)

Price: 120€/night

Four-star hotel located 800m from the Paulskirche. The main train station is nearby.

### Hotel Europa Life



Address: Baselerstr. 17

<https://www.hoteleuropa-frankfurt.de/en/inexpensive-hotel.html>

Price: 140€/night

Located in the city center near the main train station.

### Premier Inn Frankfurt City Centre



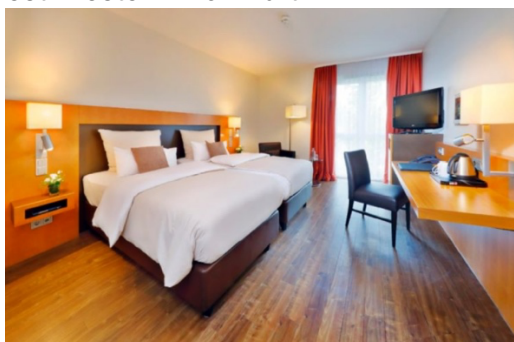
Address: Elbestrasse 7

[website](#)

Price: 120€/night

Located in the city center between the train station and the historic old town.

### Best Western Frankfurt



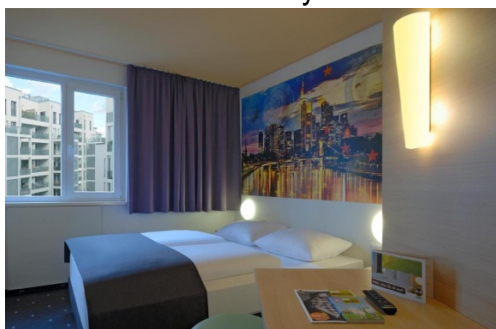
Address: Homburger Landstraße 4

[Website](#)

Price: 170€/night

Located outside the center but near FUAS

### B&B Hotel Frankfurt City-Ost



Address: Hanauer Landstraße 117, 60314 FFM

[Website](#)

Price: 110€/night

Located in the Eastend near European Central Bank refurbished district.

## Further Information

### About Frankfurt

(information source: <https://www.frankfurt-tourismus.de/en> and <https://en.wikipedia.org/wiki/Frankfurt>)

Frankfurt, officially Frankfurt am Main, is the most populous city in the German state of Hesse. Situated in the heart of the metropolitan region of FrankfurtRhineMine, ranks amongst the leading conference destinations in Germany and Europe. It is a pulsating city, cosmopolitan, colourfully diverse and highly dynamic.

Frankfurt is a city of great diversity. Banks and big business, trade shows and shopping on the one side, culture, cosiness and traditions on the other. At the most important tourist attractions, not only are you able to experience Frankfurt's rich history, there are also countless fascinating insights and surprising moments around practically every corner.

The old town with its half-timbered houses, the cathedral, the museum embankment and the Goethe House are among Frankfurt's most popular locations. A visit to the Top 10 provides an ideal overview of the metropolis by the river, also known as "Mainhattan". <https://www.frankfurt-tourismus.de/en/Discover-Experience/Best-of-Frankfurt2/Top-10-Tourist-Attractions-in-Frankfurt>

### Organizing Team

#### Frankfurt University of Applied Sciences (FUAS)



The Frankfurt University of Applied Sciences offers trans-disciplinary and extremely practice-oriented degree courses. It focuses on demographic change, renewable energies and mobility, and logistics in order to meet the need of the challenges of future. It deals with these questions in a solution-oriented manner and educate students accordingly, so that they are able to present creative input when attempting to answer these questions.

#### Technische Hochschule Ostwestfalen-Lippe University of Applied Sciences and Arts (TH OWL)



Technische Hochschule Ostwestfalen-Lippe (TH OWL) University of Applied Sciences and Arts is a strong research university for applied sciences, which offers around 53 Bachelor's and Master's degree programs as well as doctoral programs. It is located in Ostwestfalen-Lippe, a lively and economically strong region in the north-east of North Rhine-Westphalia. TH OWL is creative, innovative and sustainable.

#### TU Delft, Delft University of Technology



Top education and research are at the heart of the oldest and largest technical university in the Netherlands. Our 8 faculties offer 16 bachelor's and more than 30 master's programmes. Our more than 25,000 students and 6,000 employees share a fascination for science, design and technology. Our common mission: impact for a better society.