

Lieux & Enjeux

15
et
16
-
03
-
22

**ENSA Paris
Val de Seine**

Salled'expérimentation
and VISIO

Seminar and Visit

MCMH-EU

COST Action 18137

Dissemination program

Session in English

Detailed program & abstracts booklet

Evolution des espaces collectifs
dans les ensembles d'habitations

Evolution of collective spaces in
Mass Housing

Organized by:

Ahmed Benbernou, Yankel Fijalkow, Hélène Hatzfeld, Bernard
Haumont, Manel Khemici, Benjamin Leclercq, Aurélien Ramos, Aurore
Reynaud, Clara Sandrini

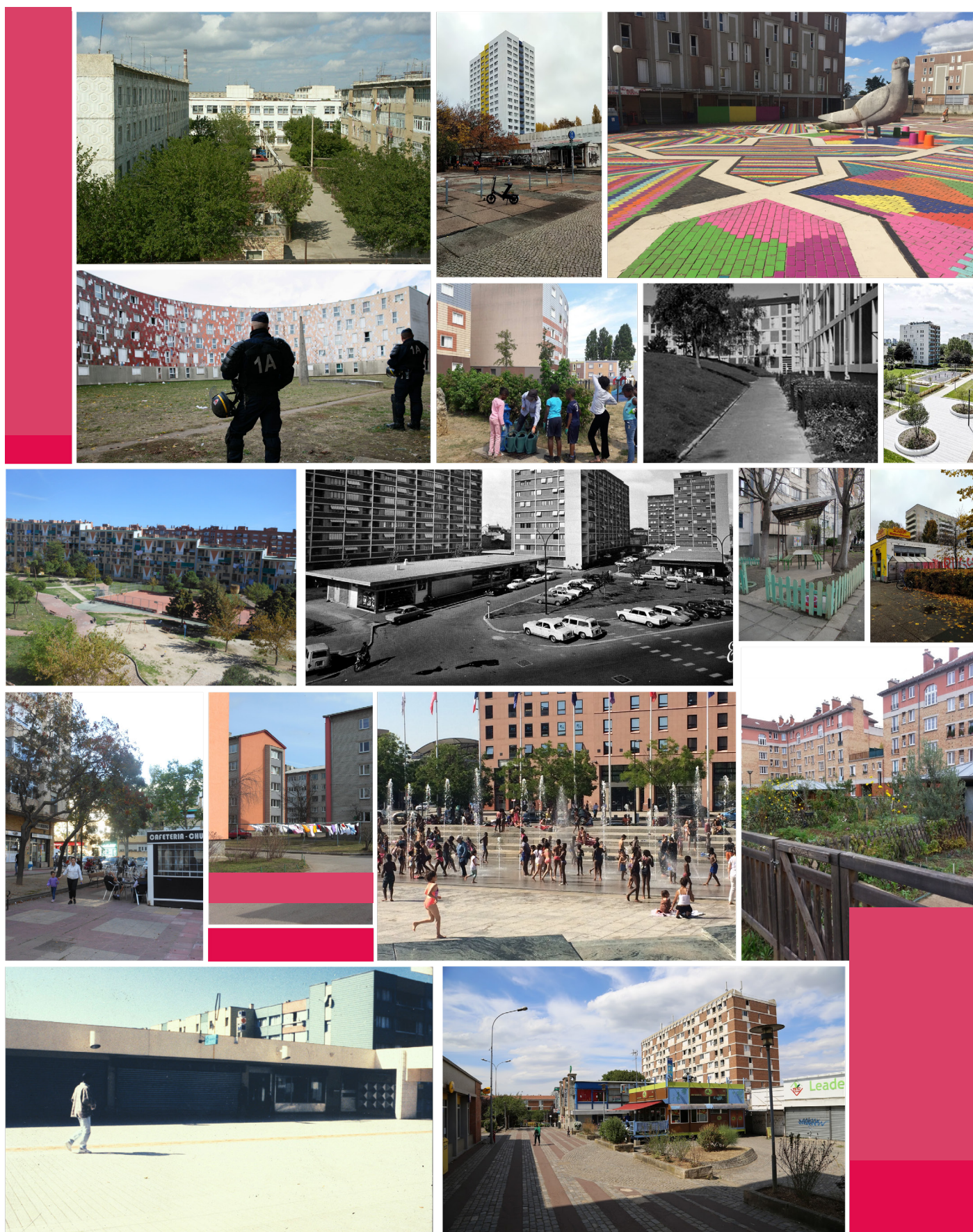
With the support of:

Joséphine Bastard & Antoine Ceschia



European
Middle Class
Mass Housing
□ □ □ □ CA18137





MCMH-EU COST Action Dissemination
Seminar «Lieux et Enjeux», 15 and 16 March, 2022

Evolution des espaces collectifs dans les ensembles d'habitations

Evolution of collective spaces in Mass Housing

In the post-war period, modern architects, influenced by the C.I.A.M. congresses (1928-1959), were called upon to build large housing estates. Inspired by the experience of the HBM and the “Cités Jardins” of the 1920s, they marked a profound change in the relationship of architecture to the city.

In terms of composition, in the name of hygiene, good orientation and ventilation, they paid almost exclusive attention to built volumes and housing to the detriment of outdoor spaces. In addition, pre-industrialization and the economy of construction led to repetition and cranes, thus developing an angular urbanism. From the beginning of the 1960s, a widespread discourse denounced the ‘dysfunctions’ of large housing estates.

While the access to healthy housing and the social project of the large housing estates satisfied the working classes, it denounced the degradation of the exterior space, the segregation of the population, violence and anomie... The problems resulting from the dilation of space and the disappearance of public spaces were considered by Team X and the promoters of the new towns.

The “politique de la ville” in France and today the urban renewal carried out by the ANRU (The National Urban Renewal Agency in France) include programs for the rehabilitation of large housing estates built in the 1950s and 1970s. They include a reflection on the development of the interface between private and outdoor spaces, whether they are private, public or collective.

Through this seminar, the idea is to put into perspective the story of the birth of these new collective spaces that make up the large housing estates in France and in Europe, the importance that was given to them in the planning processes and then in the rehabilitation operations and the degrees of investment and appropriation on the part of the inhabitants and the residents but also to explore collective spaces as source or theater of conflicts and living together.

Day 1: March, 15th Morning, 9:00 (C.E.T.)

9:30 Introduction by Philippe Bach, Yankel Fijalkow, Sabrina Bresson and Ahmed Benbernou

9:50 Bernadette Blanchon, ENSPV (France)

Mass housing landscapes: a little-known heritage, a current potential

10:10 Giulio Galasso and Natalia Voroshilova, Politecnico di Milano (Italy)

Fragility and resource: The gardens of post-war Milanese middle-class housing today

10:30 Discussion time

10:50 Bernard Haumont, CRH-LAVUE (France)

Beautification and liveliness in the public areas

11:10 Eveline Althaus, ETH Wohnforum (Switzerland)

Policies, practices, playgrounds – (Trans)formation of collective spaces in postwar high-rise estates in Switzerland

11:30 Discussion time

11:50 Round table: Transversal reflection, open to the East-West dialectic in Europe moderated by **Yankel Fijalkow** and **Clara Sandrini**

Ljubo Georgiev, Urban policies association Sofia (Bulgaria)

Hélène Hatzfeld, CRH-LAVUE (France)

Vlatko P. Korobar, University Ss. Cyril and Methodius (N. Macedonia)

Els De Vos, University of Antwerp (Belgium)

13:00 Lunch at the CRH-LAVUE

15:00 Visit of Vigneux-sur-Seine

By **Claire Doussard** (AUSser-AHTTEP), **Manel Khemici** (CRH-LAVUE),

Aurélien Ramos (CRH-LAVUE), **Aurore Reynaud** (CRH-LAVUE) and **Vincent Richard** (ENSA PVS)

Day 2: March, 16th Morning, 9:00 (C.E.T.)

9:30 Eva Storgaard, University of Antwerp (Belgium)

Psychological needs in large-scale dwelling developments

9:50 Benjamin Leclercq, CRH-LAVUE / UCLouvain (Belgium)

The reciprocal trial of “living together”, or the management of “incivilities” in large social housing estates tested by urban renewal

10:30 Claus Bech-Danielsen, Aalborg University (Denmark)

Collective spaces in Danish postwar housing - ideologies in transformation

10:50 Discussion time

11:10 Ana Rafailovska, Jasmina Siljanoska and Vlatko P. Korobar, University

“SS. Cyril and Methodius” (N. Macedonia)

Is the process of deterioration of collective open spaces in mass housing complexes from the second half of the XX reversible? Two narratives from Skopje, N. Macedonia

11:30 Lisa Kaufmann, Gießen, Liebig-University (Germany)

Outdoor Spaces and Local Identity in Densified Post-War Settlements

11:50 Discussion time

12:10 Denis Delbaere, ENSAPL (France)

The Social Housing Districts as laboratory of the Landscape (Meta)project

12:30 Audrey Courbebaisse, UCLouvain (Belgium)

Inhabitant Appropriations in Intermediate Spaces within the Large Housing Estates of Toulouse

12:50 Discussion time

13:10 Closing of the conference with the installation of the postcards resulting from the visits

Abstracts and authors' biographies

(listed in the order of presentation)

Day 1

March, 15th Morning (9:00 C.E.T.)

Welcome by Philippe Bach Director of ENSAPVS

CRH presentation by Yankel Fijalkow and Sabrina Bresson

Presentation of CA18137 MCMH-EU by Ahmed Benbernou

Biography

Ahmed Benbernou is an Architect-Urbanist. Ph.D. Student at Paris-Nanterre University, he is attached to the Center of Research on Housing (CRH-LAVUE) at the School of Architecture of Paris Val-de-Seine where he teaches. He Works on the Algeria's Economic and Social Development Plan of 1958. He was published in a collective work on 2016: *La ville d'Alger à l'heure du « Plan de Constantine »*. He Worked as an architect in Algeria then as an architect-programmer in France. He was active at the French Society of Architects as a communication officer and assistant editor for architectural criticism review *Le Visiteur*.

Sabrina Bresson is associate Professor of social sciences and is codirector of the Centre de Recherche sur l'Habitat (LAVUE CNRS).

Yankel Fijalkow is a professor of social sciences and urban planning and is codirector of the Centre de Recherche sur l'Habitat (LAVUE CNRS).

He is the author of several papers on housing and cities and books: *Sociologie des Villes* (Sociology of Cities; 2011), *Sociologie du Logement* (Sociology of Housing; 2016), *Dire la Ville c'est Faire la Ville (dir)* (To Say the City is to Make the City; 2017), *Récits de la Ville Malade* (Narratives on the Sick City; 2021).

Bernadette Blanchon, ENSPV (France), Mass housing landscapes: a little-known heritage, a current potential

Abstract: The post-war projects are said to be little concerned with the question of landscape, whereas the principles of the Athens Charter generated a large quantity of open spaces. These would not have been thought out and their realization would have produced only infamous "green spaces".

This may be the case for a part of them - and it is necessary to specify the reasons - but if we bear in mind that these housing programs accompanied the construction of the profession of landscape designer as we know it today, and give a closer look, we can observe examples of major quality necessary to preserve, and also a method of approaching open spaces. Landscape offers a topical potential for revisiting these ensembles, even the most modest ones, and for thinking about their future. We will give some examples while trying to synthesize the elements of a multi-scalar landscape approach.

MCMH-EU COST Action Dissemination
Seminar «Lieux et Enjeux», 15 and 16 March, 2022

Biography

Bernadette Blanchon is a certified Architect, Associate Professor at Ecole Nationale Supérieure de Paysage in Versailles, and a research fellow at LAREP (Laboratoire de Recherche en projet de Paysage). She has collaborated with «Bureau des Paysages», led by landscape architect Alexandre Chemetoff. Her teaching and research work focuses on landscapes in the urban environment of the post-war era. She has contributed to several research programs (1994-98, 2009-11, 2018-20) about landscape architecture in housing districts during the interwar and the post-war period in France. She has lectured at international conferences and various universities, and she has contributed to various publications, such as : the Landscape Book by Docomomo international (to be published in 2022), The Routledge Handbook of Landscape architecture education (2022), La Beauté d'une ville (2021), Teaching Landscape – the Studio Experience (2019), Les cites-jardins d'Ile-de-France (2018), Women, modernity and Landscape Architecture (2015), La Défense : a dictionary (2013) ; Landscape Research: Public Housing Landscapes (2011), Les Grands ensembles (2010), Les espaces publics modernes (1997)... She is a founding editor of the academic Journal JoLA, Journal of Landscape Architecture where she has been in charge until 2014 of the section “Under the Sky” that offers critical readings of contemporary landscape architecture.

Giulio Galasso & Natalia Voroshilova, Politecnico di Milano (Italy), Fragility and resource: The gardens of post-war Milanese middle-class housing today

Abstract : The paper presents the case of post-war middle-class housing in Milan as an example of private open spaces that lost their significance for the residents: nowadays, they pose a management problem and they are a source of conflicts between condominium inhabitants. In contrast to the examples of public mass housing, it is a former element of social distinction that became an encumbrance.

The construction of new apartment buildings driven by private investments constituted a large part of the mass housing production in post-war Italian cities during “miracolo economico”, a period of dramatic cultural and social transformations. Homeownership was an important step towards entering the middle class, and it was promoted by the government, as in many other European countries. It was a modern apartment in a dense neighbourhood that constituted the aspirations of middle-class families.

The condominium garden was one of the key features of social status, and it became the central element of housing advertisement. Considering their positive impact on the urban environment, the city administration promoted their realisation and allowed higher construction density as a reward. Gardens of Milanese collective housing lay at the intersection of middle-class families' aspirations, private developers' strategies, and public administration policies.

However, the perception of collective gardens changed during the last decades: they lost their value as a status symbol. Apart from that, their functional value

was negligible: designed with a purely decorative purpose, they were not conceived for being used by their inhabitants, and they were often strictly regulated. As a result, garden maintenance became just a financial burden and a source of conflict. Gardens are often abandoned and in some cases, the inhabitants are even considering ceding them to the municipality.

Although the gardens are seen as an encumbrance by their contemporary owners, they still contribute to the perception of Milan as a garden city and they promote the well-being of all the city inhabitants. Could the gardens be approached as a resource for new forms of domestic life? How could their role change in the Milanese urban environment?

Biographies

Giulio Galasso is an architect and researcher based in Zurich. He graduated in Politecnico di Milano with a thesis on Milanese commercial housing, with the professors Gaia Caramellino and Pier Paolo Tamburelli. He has worked as researcher in ETH Zurich, as part of the Chair of Christ & Gantenbein, where he worked on the publication “Mahalla. The Survey” edited by Humboldt Books in 2021, and “Mahalla: Urban Rural Living. Catalogue of the Uzbekistan Pavilion at the XVII Venice Architecture Biennale”.

He is currently working as a design architect in Switzerland, and he is teaching assistant in Politecnico di Milano, with professor Camillo Magni.

Natalia Voroshilova is an architecture student of Politecnico di Milano. She is currently developing her Master thesis on the gardens of Milanese Post-war housing, with the professor Gaia Caramellino and the chair of Christ & Gantenbein based in ETH Zurich. She has taken part in the publications “Mahalla. The Survey” edited by Humboldt Books in 2021, and “Mahalla: Urban Rural Living. Catalogue of the Uzbekistan Pavilion at the XVII Venice Architecture Biennale”.

Bernard Haumont, CRH-LAVUE (France), Beautification and liveliness in the public areas

Abstract : At the end of 19th century and at the beginning of 20th, with the expansion of cities and the emergence of town planning, the question of city embellishment is discussed everywhere in Europe: Camillo Sitte (1889), Raymond Unwin (1902), Patrick Geddes (1915)..., and in France Gustave Kahn (1901), Eugène Hénard (1904), Emile Magne (1908)...

In the following years and decades, that question was implemented with different doctrines and tools, where the inhabitant's liveliness was to a certain extent taken in account.

About the embellishment of mass housing, we can look at three period of times in the Paris area:

1. The gardens cities from 1910 to 1950, with Suresnes, Stains and Chatenay Malabry as main examples.

2. The ring around Paris known as the Boulevard des Maréchaux, where social housing was built from 1921 to 1939. We show some typical examples of courtyards and open spaces.
3. The Grands Ensembles, built from 1950 to 1970, with Sarcelles and La Grande Borne (Grigny) as contrasted samples.

Each period is characterized by specific ways to deal with public spaces, embellishment of city and housing, gardens and landscape, and at last with the inhabitant's liveliness and their way of life.

Biography

Bernard Haumont, sociologist, is now Honorary Professor at the Paris-Val de Seine National School of Architecture, and Research Fellow at the CRH/LAVUE. He taught in numerous schools of architecture in France (Paris-Villemin, Paris-La Défense) and abroad (Algeria, China, Italy) as well as in different Parisian Universities. He was the Head of the UMR CNRS LOUEST from 2001 until 2010.

He has carried on extensive researches on trades and professions in architecture and design and he directed some public research programs related to that topics: Euro-Conception for the PUCA, PIR-Ville du CNRS, FSP France-Algeria... He published alone or in cooperation numerous books and articles about these researches. Among the publications: *Figures salariales et socialisation de l'architecture*. In Extenso, 1985 ; *Forces et tendances de la maîtrise d'œuvre*, PUCA, Eurorex, 1992 ; *Cahiers Ramau*, different issues from 1999 to 2019.

Today, he does researches on patrimonialization processes and material dimensions of collective identities (cultural heritages, monuments, landscapes...) and their social expressions: cultural and religious events, carnivals, votive feasts... (*La vie quotidienne des Français. Fêtes et traditions*. Ed. Cobra, 2008). In this perspective, he does also researches on the aestheticization of public and collective places, and about their relations with contemporary art.

Lastly, he does researches about housing and neighborhood relations. Among the publications : *Le monde urbain*, La Documentation française, 1981; *La Société des voisins*, Ed. De la Maison des sciences de l'homme, 2005.

Eveline Althaus, ETH Wohnforum (Switzerland), Policies, practices, playgrounds – (Trans)formation of collective spaces in postwar high-rise estates in Switzerland

Abstract : Based on research conducted within the research project on "Public Space in European Social Housing" (PuSH), this contribution focuses on (trans)formation processes of collective spaces in two post-war high-rise estates in Switzerland (Tscharnergut in Bern and Telli in Aarau). From the planning period until today, the housing policies of these estates are going along with specific ideas of dealing with collective spaces, which range from community-promoting activities and participation to

control and cleanliness (Althaus 2018, 353ff).

These ideas materialized also spatially in building and managing a variety of different outdoor spaces as well as community centres and various facilities for common use (playgrounds, soccer and sport fields, community rooms and kitchens, libraries, petting zoos, cafés, crafts rooms etc.). The aging of the facilities and built structures, stigmatization, individualization and the growing diversity among residents, economic pressures as well as cost-cutting measures on social initiatives, however, are shaping, changing and contesting the original ideas of the collective spaces.

The current Covid-19 crisis reinforces these challenges, limiting and impeding direct (physical) social encounters but also showing the importance of well-designed, attractive and safe outdoor spaces, especially for children and young people. Taking the example of the redevelopment of playgrounds within the two estates, the contribution analyses the potentials and challenges of dealing with collective spaces in these settings, taking in account the policies and practices (Shore et al. 2011) that support or hinder the creation of spaces that “spark a public into being” (Marres 2005) and that are actively used and valued by the residents.

Biography

Eveline Althaus is a researcher and project leader at ETH Wohnforum – Centre for Research on Architecture, Society and the Built Environment at ETH Zurich. After her studies in social and cultural anthropology at the University of Fribourg and the Humboldt-University of Berlin, she was a researcher at Bern University of Applied Sciences, Institute of Social Work. In 2015 she completed her PhD at the Department of Architecture at ETH Zurich.

Her research focuses on social and cultural aspects of housing: living in old age and intergenerational co-living, neighbourhoods and high rise living, house biographies, migration and diversity, housing and poverty, qualitative methods in housing research and accompanying research projects in cooperation with various practice partners.

Round table : Transversal reflection, open to the East-West dialectic in Europe, on the question of collective spaces in large housing estates. The table will be moderated by Yankel Fijalkow and Clara Sandrini

- **Ljubo Georgiev**, Urban policies association - Sofia (Bulgaria), will discuss the issue of spatial and strategic planning in the municipality of Sofia through his experience at the last edition of the “One Architecture Week”, at “Vision Sofia” and at “Sofiaplan”
- **Hélène Hatzfeld**, CRH-LAVUE (France), about her book : *Les espaces libres, atouts des grands ensembles*, (CERTU, 2006)
- **Vlatko P. Korobar**, University “SS. Cyril and Methodius” (N. Macedonia), about his research on the changes in housing developments from the second half of the XXth century in the city of Skopje, with emphasis on planning, management and governance.

- **Els De Vos**, University of Antwerp (Belgium), about the e-book she co-edited together with Eva Storgaard and Uta Pottgiesser: *Reuse of Modernist Buildings, a case study handbook* (2019)

Biographies

Ljubo Georgiev was trained as an architect and urban planner. In the course of the years he combined design, activist and management experience. He began studying architecture at IUAV in Venice (Italy). He received his master's degree in Architecture, Urbanism and Building sciences from TU Delft (the Netherlands) in 2007. Ljubo Georgiev has built-up an international experience by studying and working in diverse countries and contexts: Scotland, Italy, the Netherlands, China and his native Bulgaria.

He has authored a number of articles and has lectured at different conferences and events around Europe. Between 2014 and 2016 he was director of One Architecture Week, an international festival for contemporary architecture and the built environment. From the beginning of 2017 until the end of 2019 he led the team, which coordinated and co-created the long term development plan for Sofia, Vision Sofia 2050.

Parallel to this, between 2017 and the end of 2021 he was the director of Sofiaplan - Sofia's municipal strategic and spatial planning body. Since the beginning of 2022 he is head of the Urban policies association in Sofia.

Hélène Hatzfeld is a researcher in politics. She has taught urban policies in architecture schools. She has published two books resulting from seminars with her students: *Banlieues : villes de demain. Vaulx-en-Velin au-delà de l'image* (Éditions du CERTU, 2000) and with Yves Moutton, architect: *Les espaces libres, atouts des grands ensembles* (Éditions du CERTU, 2006). Latest publications: *Les légitimités ordinaires. Au nom de quoi devrions-nous nous taire ?* (L'Harmattan, 2011). *La politique à la ville. Inventions citoyennes à Louviers (1965-1983)* (Presses universitaires de Rennes, 2018).

Vlatko P. Korobar, Graduated from the Faculty of Architecture in Skopje, University Ss. Cyril and Methodius, where he received his PhD degree.

Professor of Urban Planning and Design, currently teaches at the Doctoral School of the Faculty of Architecture, University Ss. Cyril and Methodius in Skopje.

Was dean of the Faculty from 2001 to 2009.

He has organised and participated in numerous research projects and conferences at home and abroad.

Clara Sandrini is an architect, with a doctorate in architecture. She is a professor at ENSA Paris-Val de Seine and a researcher at CRH-LAVUE.

Her research themes focus on the interaction between social and spatial forms. She is particularly interested in urban forms known as «large housing estates» in France and Europe, and conducts research-action projects aimed at encouraging the participation of residents in the design, construction and decision-making processes of city building.

She has published her doctoral research, *Paris, Politique urbaine et mémoire collective, La monumentalisation de l'image parisienne depuis l'Occupation* (Paris, L'Harmattan, 2014), as well as *Planification soviétique et pratiques sociales* (Paris, L'Harmattan, 2020).

Els De Vos, engineering architect and urban planner, is professor at the University of Antwerp, where she chairs the interior architecture programme. Her research is situated in the field of history and theory of (interior) architecture, home culture, gender, reuse and public space in the second half of the 20th century.

She obtained a PhD on the architectural, social and gender-differentiated mediation of dwelling in 1960s–1970s Belgian Flanders (published in 2012). She has co-edited several books in the field of architecture, including *Theory by Design* (Antwerp University Press) and *Reuse of modernist buildings: a case study handbook* (2019). As member of the scientific committee of the new magazine *Inner – The interior architecture* she contributes to the development of a European open access platform in interior architecture.

She has published in many journals and has co-curated several exhibitions, most recently *Female Symbols and Urban Space* (Brussels 2020-21). Currently, she is involved in the COST-action on European Middle Class Mass Housing, where as workgroup leader she focuses on concepts and methodologies to study middle class mass housing (<https://mcmh.eu/>).

March, 15th Afternoon

Visit of Vigneux-sur-Seine by Claire Doussard (AUSser - AHTTEP), Manel Khemici (CRH-LAVUE), Aurélien Ramos (CRH-LAVUE), Aurore Reynaud (CRH-LAVUE) and Vincent Richard (ENSAPVS)

Meeting point

There are two possibilities:

- a departure at 2 P. M. (C.E.T.), meeting in the hall of ENSAPVS
- a meeting on site at 3 P. M. (C.E.T.), Vigneux-sur-Seine RER D station (Place du Président Robert Lakota)

For those who do not have a Navigo pass, we invite you to buy your tickets in advance at the RATP ticket office (about 8.6 euros round trip) For our guests who eligible for COST reimbursement, the purchase of the ticket is included in the daily allowance provided to you.

Biographies

Claire Doussard is a landscape engineer, urban designer, and holds a PhD in urban planning. She is a specialist in the sustainability assessment of urban developments, and advises professionals as an independent consultant.

Manel Khemici Holder of a Master degree of Architecture obtained in 2019, I am currently

in the second year of my thesis under the direction of Clara SANDRINI within the CRH-LAVUE, and my research work focuses on «Inhabiting facing urban transformations linked to the metropolization process of the city of Algiers».

Aurélien Ramos is a landscape architect and PhD in urban studies. He is an associate teacher at the national school for architecture and landscape in Versailles and Bordeaux. His research focuses on ordinary urban practices as gardening or playing but also all the practices of maintenance and care that shape public spaces. He questions their place and their evolution in the public policies of the ecological transition perspective.

Aurore Reynaud, architect DE, teacher, Phd student in architecture (LAVUE- ENSAPVS - CIFRE AUA Paul Chemetov) research topic: REHAB - receive and studying an architectural heritage trivialized (passing on and intervening in the AUA heritage). It is in this perspective that his research, teaching and practice concerns question the tensions around the patrimonialisation of everyday architecture.

Vincent Richard du Perron is a Master 2 student in the «Transformation» field of study at the Ecole Nationale Supérieure d'Architecture de Paris Val-de-Seine. He also previously studied Law-Political Science with a specialization in Journalism at the Université Panthéon Assas II. He is currently writing a dissertation on the «Briques Rouges», a landscape designed by landscape architect Jacques Simon. More specifically, this research focuses as much on the initial composition work as on the various transformations that have been carried out on this landscape. This question of the transformation of the Grands Ensembles is also the main theme of his graduation project (PFE).

Map of the round trip



Day 2
March, 16th Morning (9:00 C.E.T.)

Eva Storgaard, University of Antwerp (Belgium), Psychological needs in large-scale dwelling developments

Abstract : An alarming housing shortage and a lack of labour and traditional construction materials propelled in the 1960s-70s the Danish dwelling production towards large scale dwelling developments. In the 1970s about ¼ of the Danish population lived in such new large-scale dwelling developments. They were built according to industrialization and standardization principles and were fulfilling both technical and economical demands. Other demands, especially psychological needs, were in this process neglected, the Danish psychologist Inge Gehl observed. According to her the focus on mass production, time-management and low-cost caused a lack of areas for interaction, human contact, appropriation, aesthetic sensation, play, experience etc. To approach these issues on the level on architecture design and urban design Gehl wrote a book *Bo-miljø* (1971) which was meant to “to provide a better basis for planning and evaluating living environments by giving an account of some of the most important needs of psychological nature which should be satisfied for man in his living environment”.

This paper takes a closer look on Gehls view on psychological needs in dwelling environments, being convinced that those observations and conclusions made more than 50 years ago, still count and have value today. In addition, this paper discusses how the collective spaces of two often criticized projects, Gellerup Bypark (region of Aarhus, architects Blach Petersen & Harboe) and Albertslund Syd (region of Copenhagen, architects Fællestegenestuen), recently have been transformed, respectively by SLA and Vandkunsten. It illuminates how these transformations take into account these so-called psychological needs that Gehl points to, and how user participation has been part of the rehabilitation process. As Gellerup Bypark is a high-rise complex and Albertslund Syd a low-dense complex, this paper also illuminates how two divergent kinds of projects can be approached – both aiming at an improved place for living.

Biography

Eva Storgaard is a researcher and a lecturer at The Faculty of Design Sciences at the University of Antwerp. She holds a PhD in architecture entitled *The Architecture of Danish Modern. Empiricism. Craft. Organicism.* (2019). She has a special interest in the architectural culture of the Modern Movement. She is an active member of the International Specialist Committee – Interior Design of DOCOMOMO and published in various academic journals.

Benjamin Leclercq, CRH-LAVUE / UCLouvain (Belgium), The reciprocal trial of “living together”, or the management of “incivilities” in large social housing estates tested by urban renewal

Abstract: In France, the urban renewal policies carried out in some of the most disqualifying large housing estates held out the promise of a better life for their inhabitants. They were supposed to finance the rehabilitation of housing and the requalification of common spaces in order to transform the large housing estates into residences “like the others”. For social landlords, this policy has been a godsend: it has granted them funding to maintain or replace an often degraded and low-quality property assets, and above all to finance so-called “residentialization” of outdoor spaces, which, among other things, allows them to reduce the management costs of social housing. However, these measures are also at the heart of conflicts and symbolic struggles between residents and between landlords and tenants, which crystallize around the persistence of various residential disorders, often designated as the result of “deviant” practices and other “incivilities” committed by certain residents. Based on a thesis on the processes of professionalization of the management of so-called “sensitive” neighborhoods, this paper proposes to apprehend these conflicts from the notion of “reciprocal trial” forged in his time by Gerard Althabe. In what way do the policies of transformation of the external spaces of large social housing estates shift the boundaries of a reciprocal trial between residents, towards a reciprocal trial between landlords and tenants that new intermediation professionals are now in charge of defusing?

Biography

Benjamin Leclercq is sociologist and architect by training, and postdoctoral researcher at the Catholic University of Louvain (UCLouvain). At the intersection of the sociology of housing policy, the sociology of engagement, the sociology of social work and professional groups, and the anthropology of housing, his research focuses on the evolution of social housing policies and on ordinary and professional intermediation practices in residential spaces.

Claus Bech-Danielsen, Aalborg University (Denmark), Collective spaces in Danish postwar housing - ideologies in transformation

Abstract: This paper focuses on the outdoor spaces in postwar social housing in Denmark. These spaces were originally designed according to the principle of equality: The political objective in the Danish welfare society was, that everyone should have equal access to the same qualities – no one should have more or less than others. This also applied to the green outdoor spaces. In contrast to the fenced private gardens in the one-family house areas, the outdoor spaces in the large-scale social housing areas were the spaces of solidarity. These spaces are now undergoing drastic transformation, and new ideologies are being implemented. This happens in urban strategic planning, trying to attract new residents to the areas. However, not only new residents are invited into the areas. Private contractors and thus the market forces characterising urban development in the surrounding city also penetrate the social housing areas. Along with the market forces come privatisation and increased individualisation - and collective spaces are being criticized for a ‘lack

of private ownership' and are being transformed into private gardens. The ongoing transformations show that original values of the welfare state are deteriorating. The current transformations in the large-scale social housing areas from the post-war period are to be regarded as an ideological battleground. This is also experienced by residents who find that their housing area has been politicised and has increasingly become a battleground for various political views and factions.

Biography

Claus Bech-Danielsen, architect PhD., professor, Aalborg University. Holds several positions of trust in the Scandinavian research community, chairman in Think Tanks, and have received awards for his research. In his research Bech-Danielsen is studying the field between architectural space and social space. Special focus on postwar housing, disadvantaged housing areas, affordable housing, homemaking and homefeeling, trends in housing architecture and housing ideals and housing quality. Bech-Danielsen is currently (2019-2028) head of research in a major research project that follows the physical transformations in the 15 most disadvantaged housing areas in Denmark. Focus is on the residents' experiences and everyday lives, and on the reputation of the residential areas. Also, the consequences of the established sociale mix is an important topic in the research.

Ana Rafailovska & Jasmina Siljanoska & Vlatko P. Korobar, University "SS. Cyril and Methodius" (N. Macedonia), **Is the process of deterioration of collective open spaces in mass housing complexes from the second half of the XX reversible? Two narratives from Skopje, N. Macedonia**

Abstract : A quarter of a century ago, Patsy Healey defined planning as "managing our coexistence in shared spaces". In the later period this notion was further connected to the aspects of governance. In discussing the transformation of housing developments built until the end of the seventies in the last century. it is exactly these two aspects, planning and governance, that have the biggest bearing on the initial quality and the later condition of these spaces. Large outdoor spaces which played a crucial role in the mass housing developments are a perfect example of shared spaced where different forms of coexistence existed and could exist. Yet, they have been subjected to different processes leading to reducing of their shared character or public-ness. This has been achieved not only by appropriating outdoor spaces for private interests, which is a dominant feature in our society and city development, but also by the lack of interest for public concerns from individuals which undermines the initiatives of civil society groups. Open spaces differ substantially in concept and size, but more importantly in their ecological, social, and symbolic roles. Broad comparative analyses have confirmed that open spaces have a tremendous range of forms and functions. They are generated from different cultural values and settings in which they have been develop and have always projected complex social and political meanings.

Biographies

Ana Rafailovska, Teaching Assist. MA, Faculty of Architecture, University “SS. Cyril and Methodius”

Jasmina Siljanoska, Prof. PhD, Faculty of Architecture, University “SS. Cyril and Methodius”

Vlatko P. Korobar, Prof. PhD, Faculty of Architecture, University “SS. Cyril and Methodius”

Lisa Kaufmann, Gießen, Liebig-University (Germany), Outdoor Spaces and Local Identity in Densified Post-War Settlements

Abstract : In the 1950s, row housing ensembles with rich greenery emerged in almost every German city with the purpose of compensating wartime deconstruction, relocating displaced individuals and housing allied troops and their families. Once sold as modern housing, today, nearly 70 years after their erection, the building and open space typologies no longer meet societal demands. Contributing factors are outdated construction standards and inadequacy of accessibility, as well as layout and size. Despite all the restrictions, however, the housing estates have a clear advantage over the already gentrified urban districts as they provide affordable housing. Thus, because of the extent of the settlements, they have a stabilizing effect on ever rising rents. Against the backdrop of the housing shortage, underutilized reserves of outdoor spaces and densification potential it offers, these settlements are once again shifting into focus.

This presentation shows how an altered building habitus effects the usage and appropriation of outdoor spaces. On planned and completed projects we discuss the two main approaches, “Transformation & Appropriation” and “Preservation & Improvement of the existing urban landscape” and reflect on the local identity of post-war settlements before and after densification.

Biography: **Lisa Kaufmann** is an architect, university teacher and early career researcher. After working as a project leader in Berlin, she joined the chamber of architects to work on her own projects. In 2019, she started her doctoral studies on the topics of densification in row housing settlements and post-war modernism as a cooperative doctorate between Technische Hochschule Mittelhessen and Justus-Liebig-University Giessen, Germany. She is also a new member of MCMH working group 3.

Denis Delbaere, ENSAPL (France), *The Social Housing Districts as laboratory of the Landscape (Meta)project*

Abstract

The researches that I have dealt with Bernadette Blanchon and Jorn Garleff about the Landscape Planning and the Landscape Design of the French social housing districts are based on the assessment that most of the public and green spaces of those projects were not designed by Landscape architects. However, most of them get a qualitative green public

spaces set, cleverly using the local topography, organizing a fluid and efficient system of views and walks, strongly introducing nature in the cityscape, reusing local historical heritages and finally creating attractive collective places for the inhabitants. The analysis of the mechanisms explaining the creation of such qualitative urban landscapes despite the project manager's lack led me to imagine the two concepts of « metaproject » and « landscape alteration » that I will briefly present through some examples, in order to show their actuality and pertinence at the rising of the great territorial transition.

Biography

Denis Delbaere is a landscaper DPLG (1993), doctor from EHESS (2004), habilitated to direct research (2014) and professor in the field « Ville et Territoire » at the Ecole Nationale Supérieure d'Architecture et de Paysage de Lille. He is the author of « La Fabrique de l'espace public : ville, paysage, démocratie » (2010), of « Table rase et Paysage : une exploration des paysages de la modernité pour un renouveau critique du planisme » (2016) and of « Altérations paysagères : pour une théorie critique de l'espace public » (2021). He leads the inter-school landscape network « Critique et Projet de Paysage » and directs the scientific collective LIKOTO, as well as the journal of critique of public space projects *banC public*

Audrey Courbebaisse, UCLouvain (Belgium), *Inhabitant Appropriations in Intermediate Spaces within the Large Housing Estates of Toulouse*

Abstract

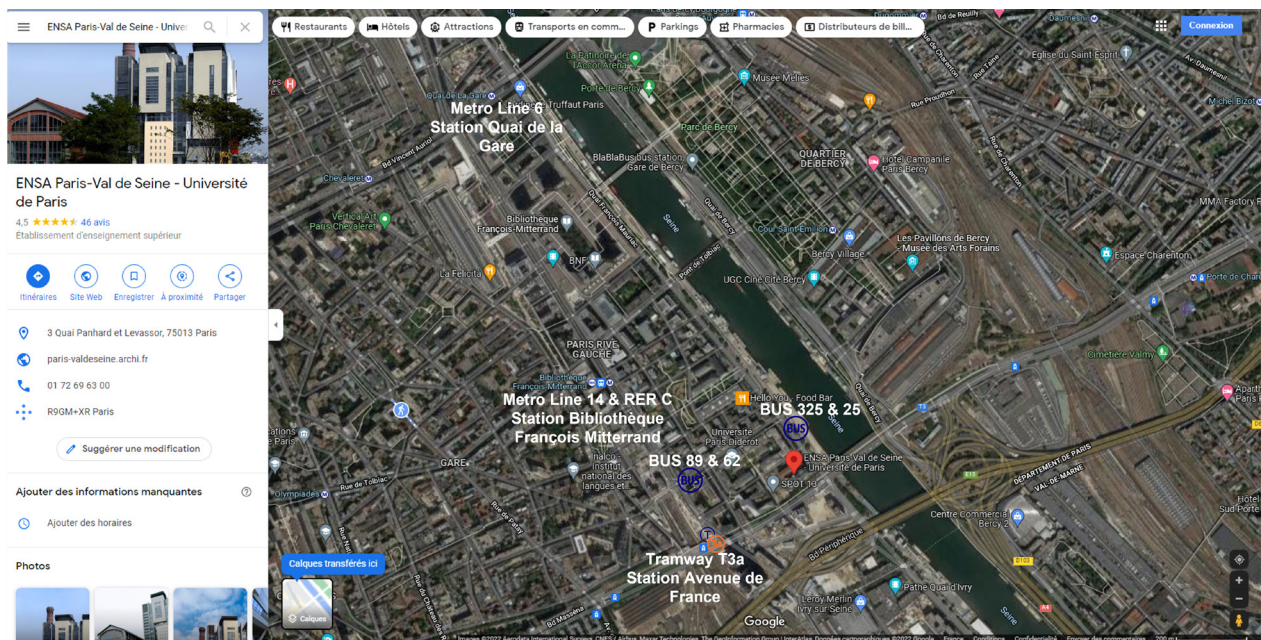
Intermediate spaces, free and open, which often have an ambiguous legal status, are characteristic of the large housing estates built in the second half of the 20th century. They also provide a support for the appropriation by the inhabitants of their living space and a setting in which to express creativity. We hypothesise that these appropriations, both individual and collective, embody a certain relationship to space, but also to the other and to society. In this respect, they include a political dimension. This is what we propose to examine in three large housing estates in Toulouse. In what way do the inhabitants' appropriations of intermediate spaces constitute a political act and to what spatial and social rationale do they correspond? First, we introduce the research sites and propose some methodological elements. Second, we focus on the spatial configurations that are conducive to the inhabitants expressing themselves and the conditions in which individual and collective appropriations acquire a political dimension. Finally, we present a possible typology of ways of forming a landscape with the intermediate spaces of large housing estates.

Biography

Audrey Courbebaisse is an architect, doctor in architecture and she is currently an assistant professor at the LOCI-UCLouvain faculty and a member of the *Uses&Spaces* unit at the Louvain research institute for Landscape, Architecture, Built environment. Audrey is interested in housing, and more specifically in the relationship that people have with

their living space. Her work raises the question of the future of buildings and housing complexes built in the 20th century in our territories, from a spatial and social point of view. She co-directs the prospective research «CareTaker/support: Resilience Laboratory of Housing», which focuses on care practices and spaces in housing, in the COVID-19 period in the Brussels Capital Region, as well as the research «Mes Vieux Voisins», in the framework of the PUCA research programme «Re(ne)rer les copropriétés», which questions the impact of ageing inhabitants in horizontal condominiums dating from the 1970s in Toulouse and in Brussels. She is the author of the book «Toulouse, le sens caché des grands ensembles» published in 2018 by Presses Universitaires du Midi.

Closing of the conference with the installation of the postcards resulting from the visits and Cocktail



ENSAPVS is located at 3 Quai Panhard et Levasseur, 75013 Paris. The school is accessible by :

Metro:

Line 14, Station: Bibliothèque François Mitterrand

A little further down the Line 6, Station: Quai de la Gare

By tramway:

Line T3a, Station: Avenue de France

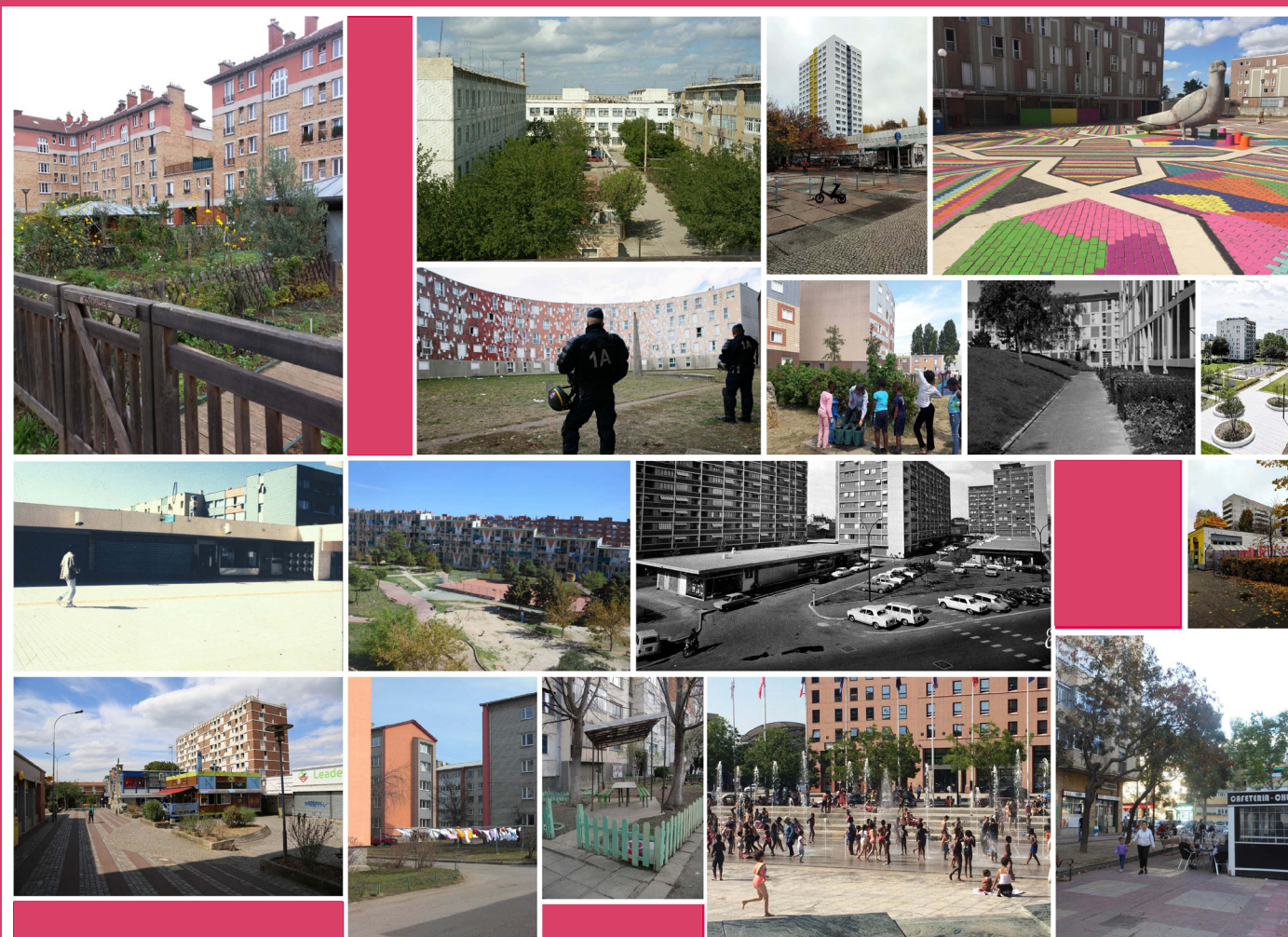
By bus:

Line 325 or 25, Stop: Watt

Line 89 or 62, Stop: Porte de France

RER C, Station: Bibliothèque François Mitterrand

MCMH-EU COST Action Dissemination
Seminar «Lieux et Enjeux», 15 and 16 March, 2022



CRH **LAVUE** **PARIS VAL DE SEINE**
 UMR 7218 CNRS ÉCOLE NATIONALE SUPÉRIEURE D'ARCHITECTURE

Centre de recherche sur l'habitat

UMR LAVUE

ENSAPVS

3-15 Quai Panhard et Levassor 75013 Paris

www.crh.archi.fr/

<https://crhlavue.hypotheses.org/>

**European
Middle Class
Mass Housing**

□ □ □ □ CA18137

cost
EUROPEAN COOPERATION
IN SCIENCE & TECHNOLOGY

Funded by the Horizon 2020 Framework Programme
of the European Union

ISCTE IUL
Instituto Universitário de Lisboa

DINAMIA'CET
CENTRO DE INVESTIGAÇÃO E INOVAÇÃO
EM ARQUITECTURA E TERRACOTAS