

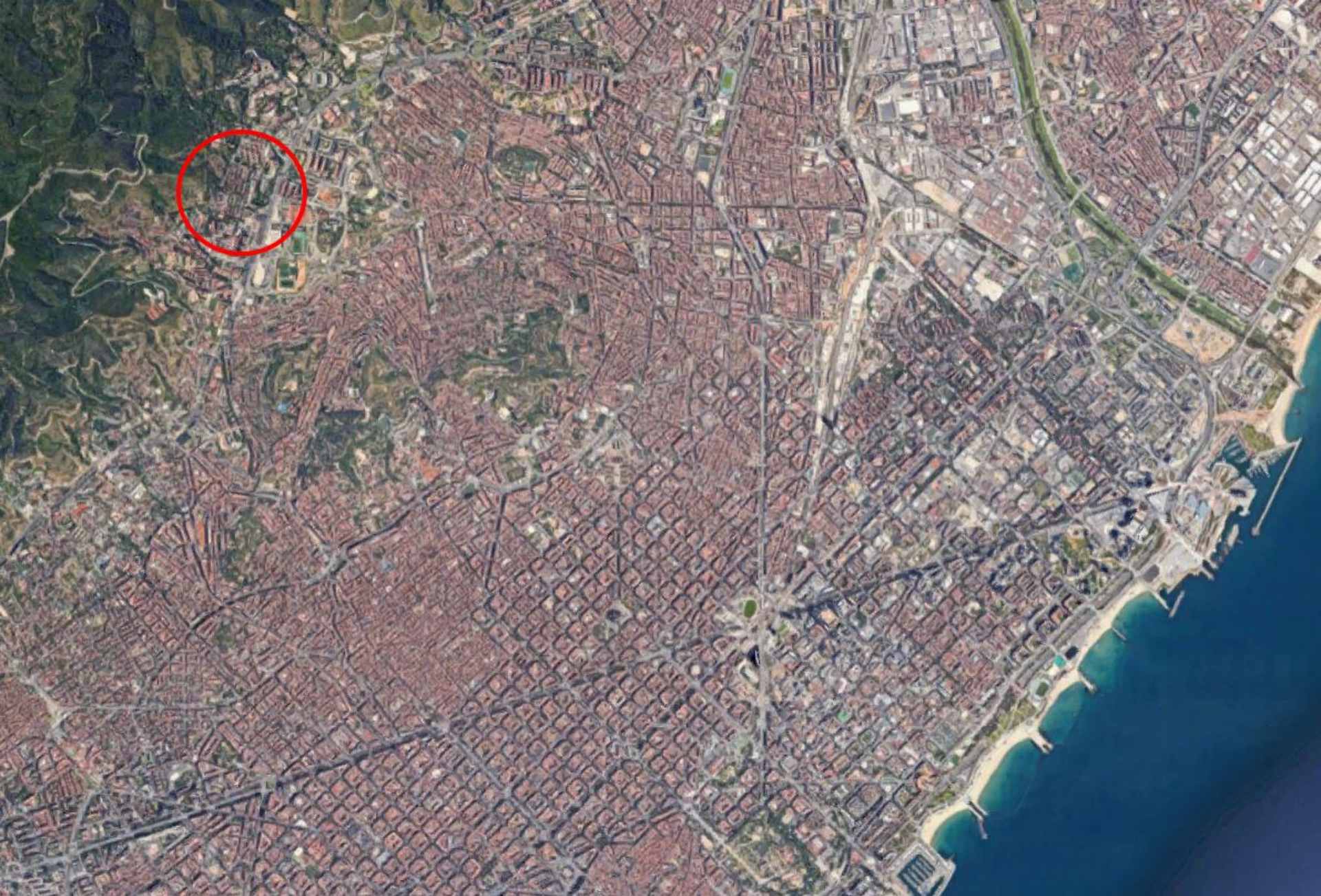
Montbau's Neighbourhood 1956-68

Barcelona, España

Architects: Giraldez, Lopez Iñigo, Subias/ Baldrich, Soteras y Bonet.

Teresa Rovira

Carla Herrera



Barcelona at present

Proposal situation according to the centre and services

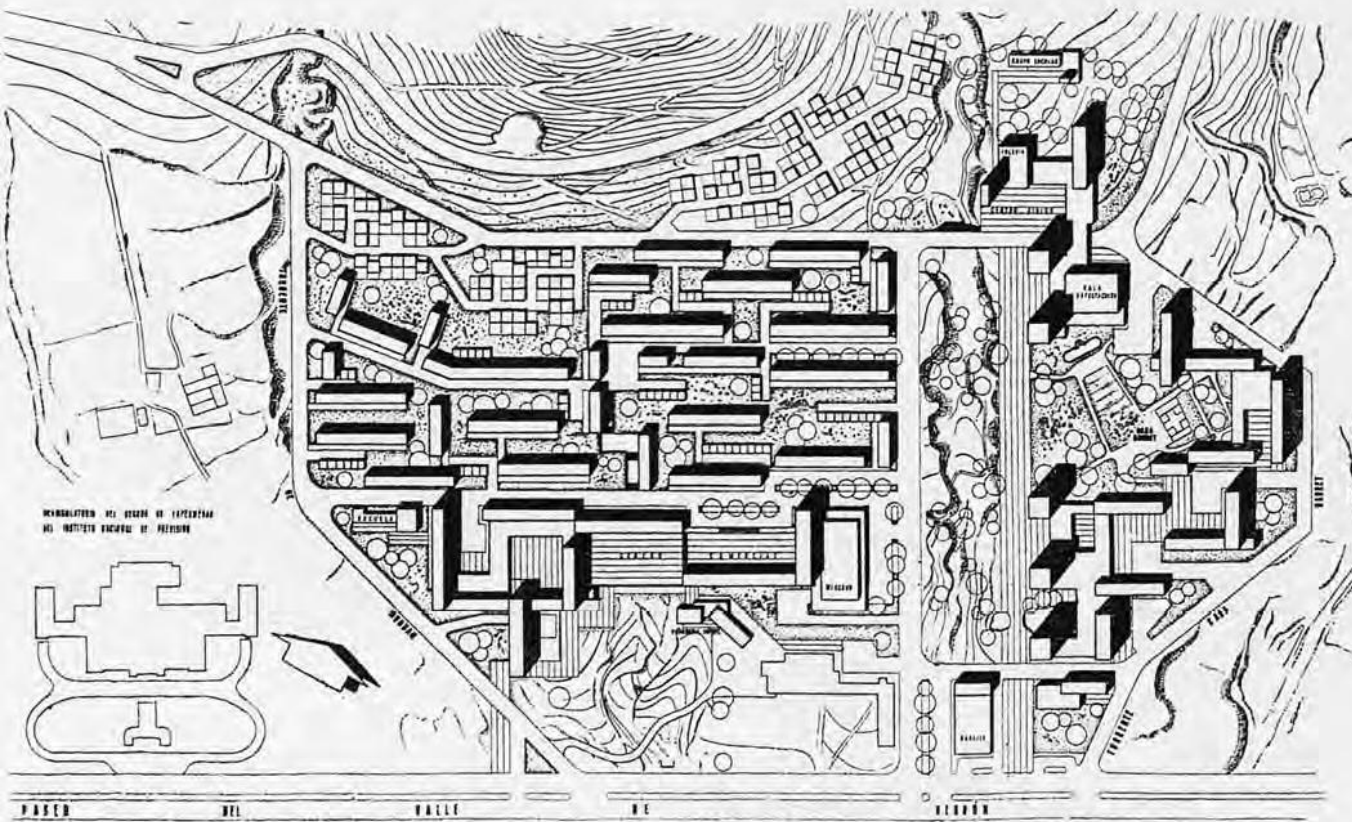


Montbau at present

- In 1957 the first plan was presented, which proposed 3 phases of construction:
 - The first phase of the SO sector with 1,266 homes distributed in horizontally arranged blocks;
 - The second phase of the NE sector, with 960 houses distributed in perpendicular blocks and 5 isolated towers
 - and the third phase single-family homes located on the side of a mountain.
- In 1962 a new plan was presented, which modifies the ordering of the SE sector, creating “L” blocks arranged horizontally and expanding the number of towers to 9.

The frontality between the towers is also eliminated, turning them 45 degrees.

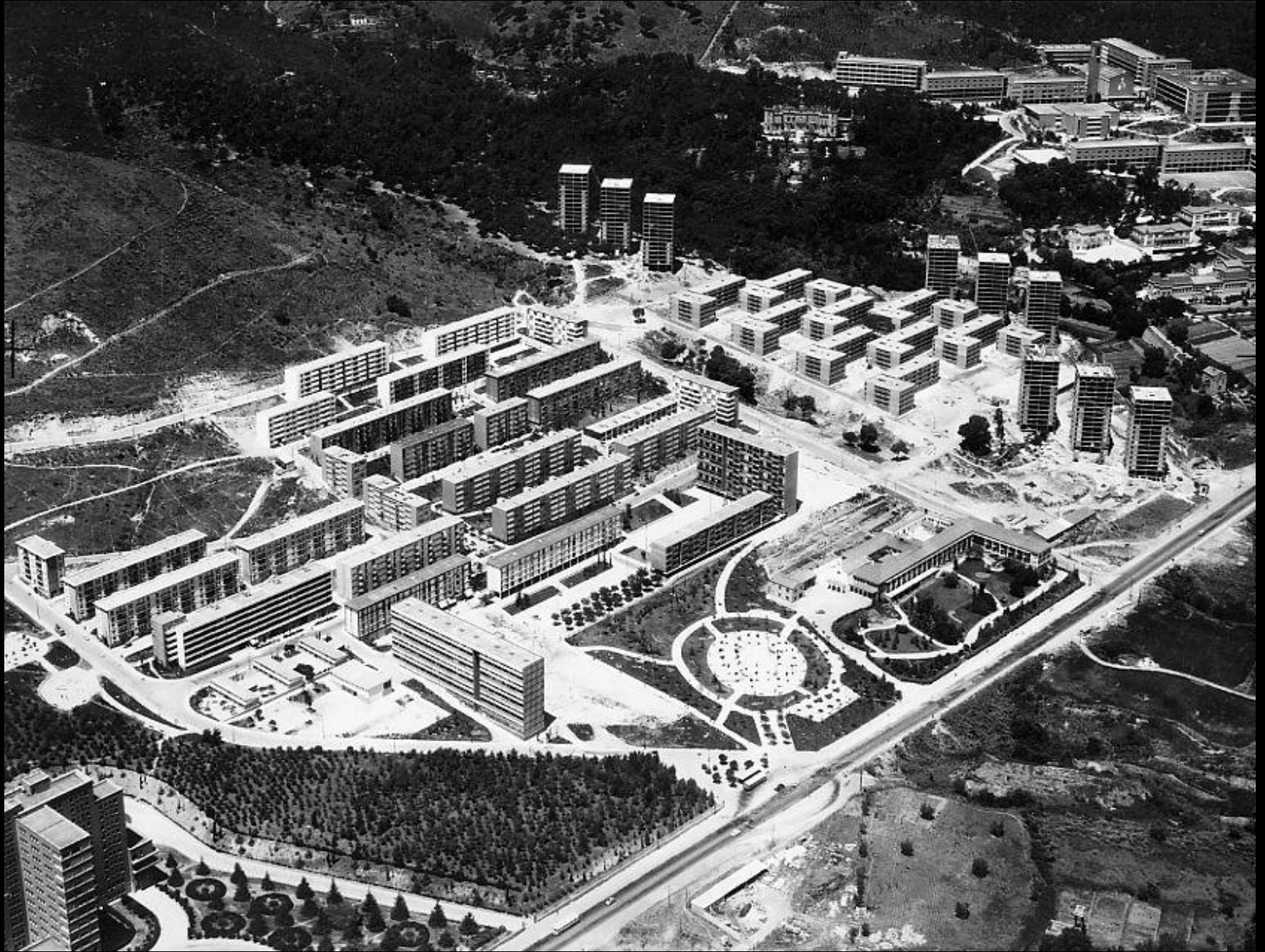
This plan includes the almost definitive position of the constructed buildings.



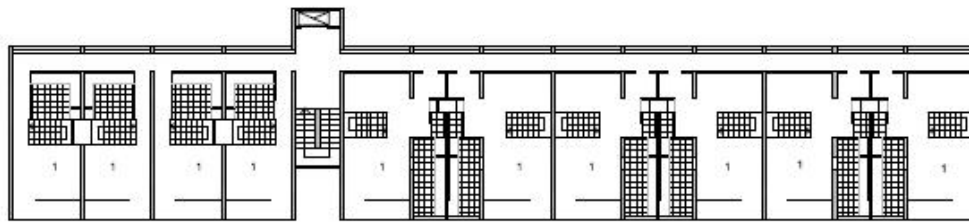
1957 proposal



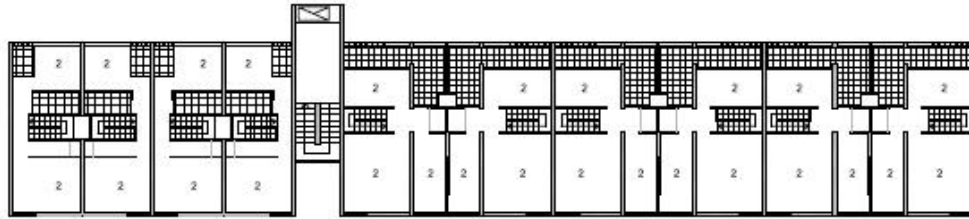




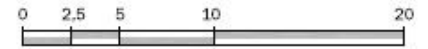
Connectivity



Vivienda tipo duplex, Planta Baja

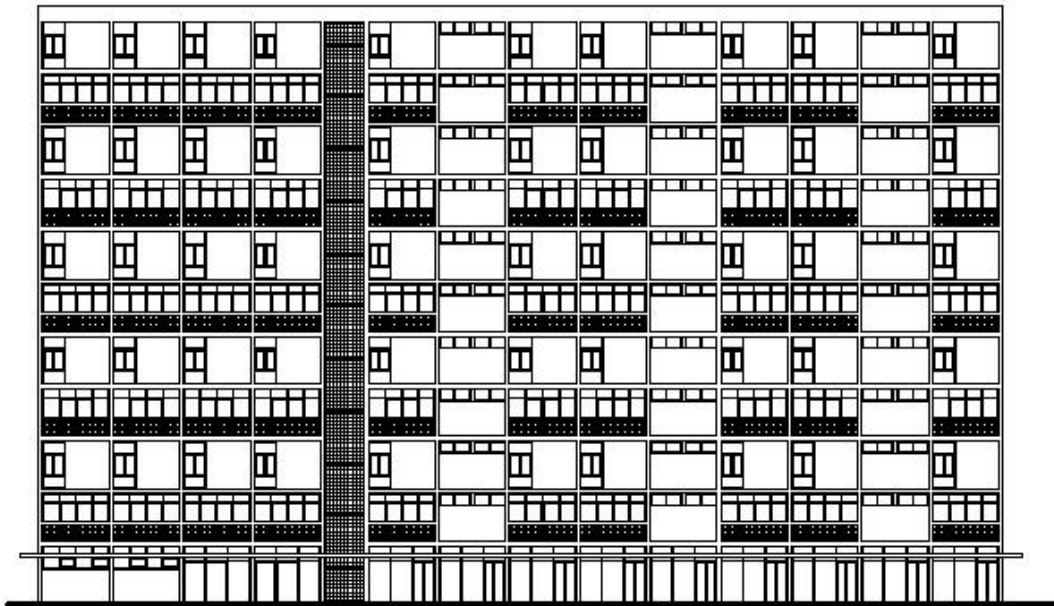


Vivienda tipo duplex, Planta Alta

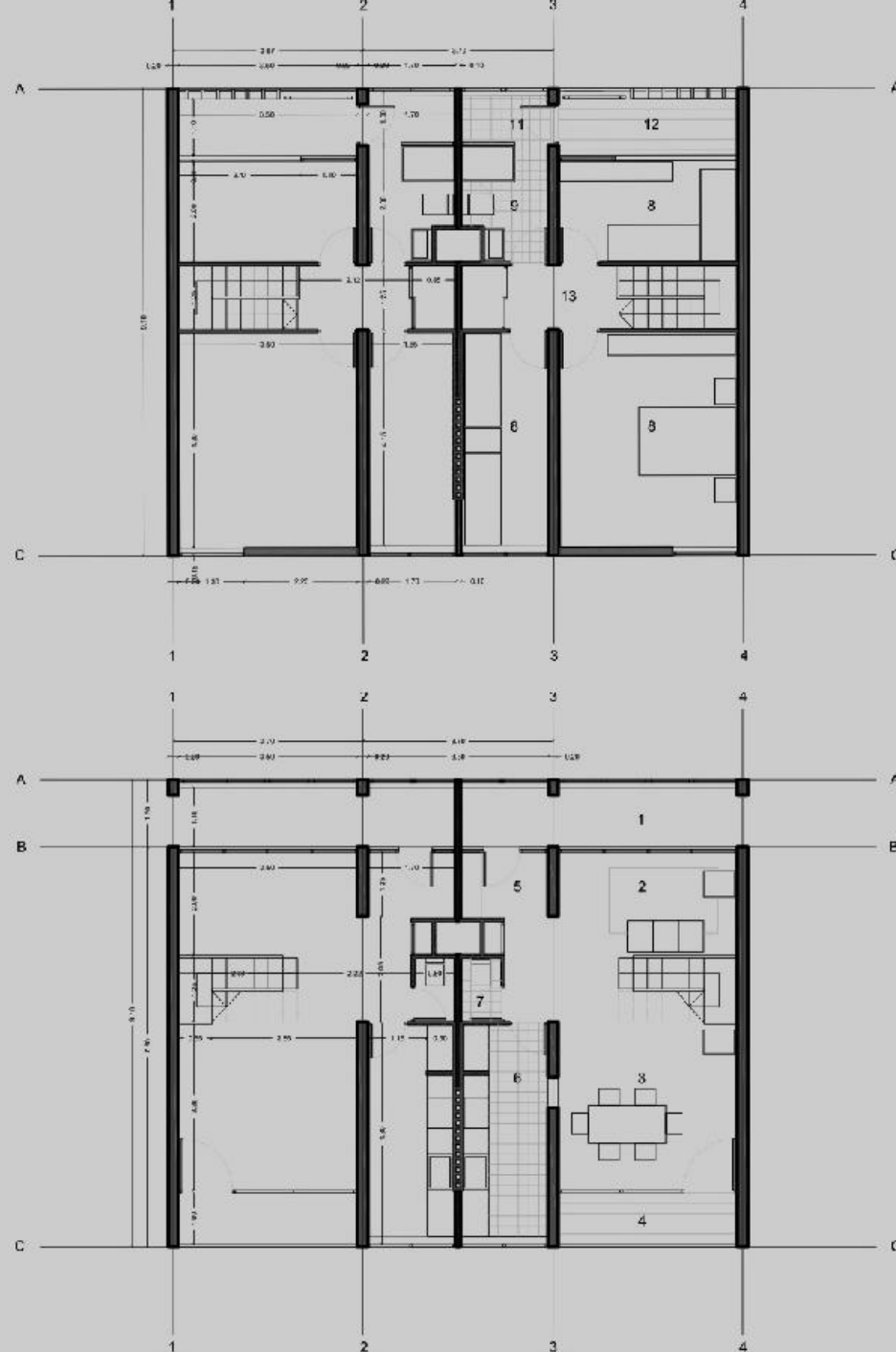
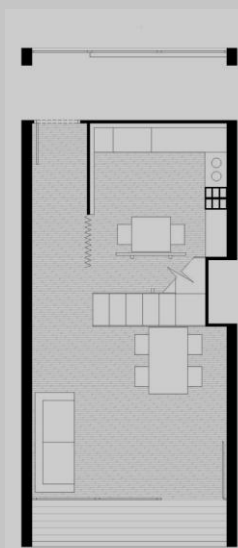
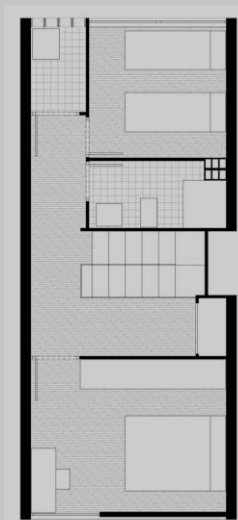


Referencias

- 1 Living - Comedor
- 2 Dormitorio
- Núcleo Húmedo



Vista Longitudinal



Dúplex



Montbau has become a key Modern Architecture proposal, due to the fact that even with the poor technical conditions in the fifties, it was built using prefabricate materials. It has been used as inspiration for many other proposals



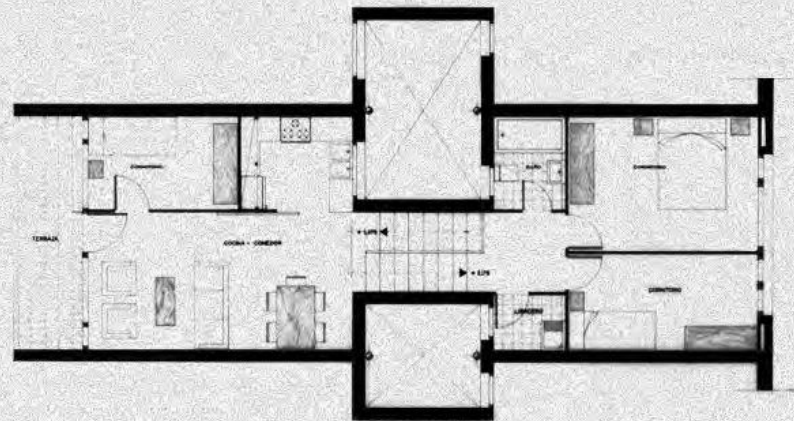
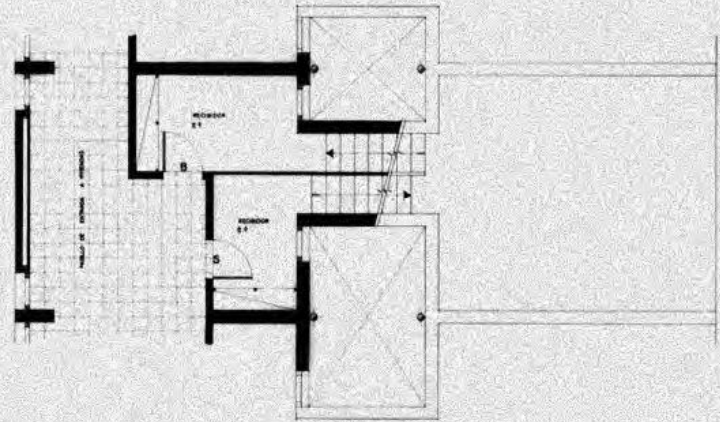
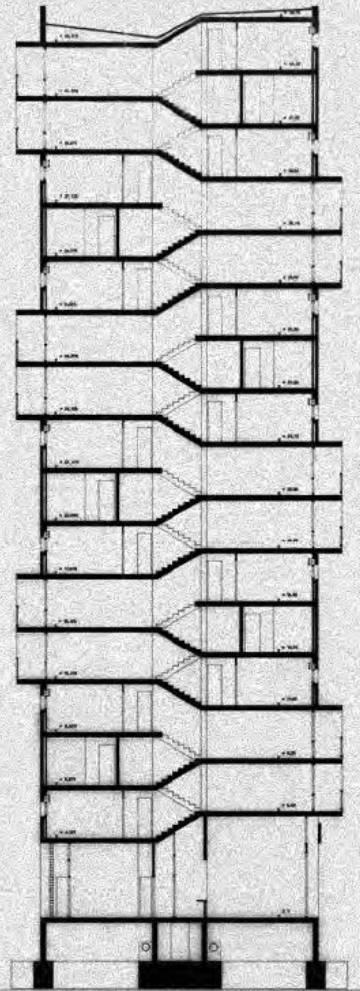
At present it is well integrated in the urban net of the city .
The open spaces are still of high quality
A restoration was carried out in the central square of the neighbourhood in 2010.



In some cases, ground floor act as porch or a place to watch the city
Creating transparencies and views through landscape.



The variation of the number of levels in different buildings, and also the slight differences between the façades create a very rich environment.



The towers show an intelligent development of flats using half levels.



It would be desirable that a general restoration plan be made on the facades of the blocks, which show alterations in their original volume and visible deterioration.

It can be appreciated the role of vegetation to humanize the space between towers.



The atemporality of the proposal.